



Microsoft Fabric

This presentation is the property of Microsoft and is intended for informational and educational purposes only. You may use, copy, and distribute this presentation for your personal, non-commercial purposes. You may not modify, alter, or create derivative works from this presentation without the prior written consent of Microsoft. You may not use this presentation to misrepresent, defame, or disparage Microsoft or its products, services, or affiliates. You may not use this presentation to endorse or promote any other products, services, or organizations without the prior written consent of Microsoft.

By using this presentation, you agree to abide by these terms. If you do not agree, you must not use this presentation. Microsoft reserves the right to change these terms and conditions at any time without notice. Microsoft disclaims any and all warranties, express or implied, relating to this presentation, including but not limited to the accuracy, completeness, timeliness, or suitability of the information contained herein. Microsoft is not liable for any damages, losses, or liabilities arising from your use of or reliance on this presentation.

Please review the terms of use posted in the content library.

#FABCONSQLCON2026

**FABCON**

Microsoft Fabric  
COMMUNITY CONFERENCE

**SQLCON**

Microsoft SQL  
COMMUNITY CONFERENCE

**ATLANTA** MARCH 16 - 20, 2026



# Data Modeling Like a Pro in Fabric

Rui Romano

Power BI PM

**in** /ruiromano

**X** @RuiRomano

Christian Wade

Power BI PM

**in** /christianwade1

**X** @\_christianwade



Fabric IQ

## Unified Data

Structured, Unstructured,  
Real-Time, Graph





# Fabric IQ

## Business Intelligence

Semantic Models



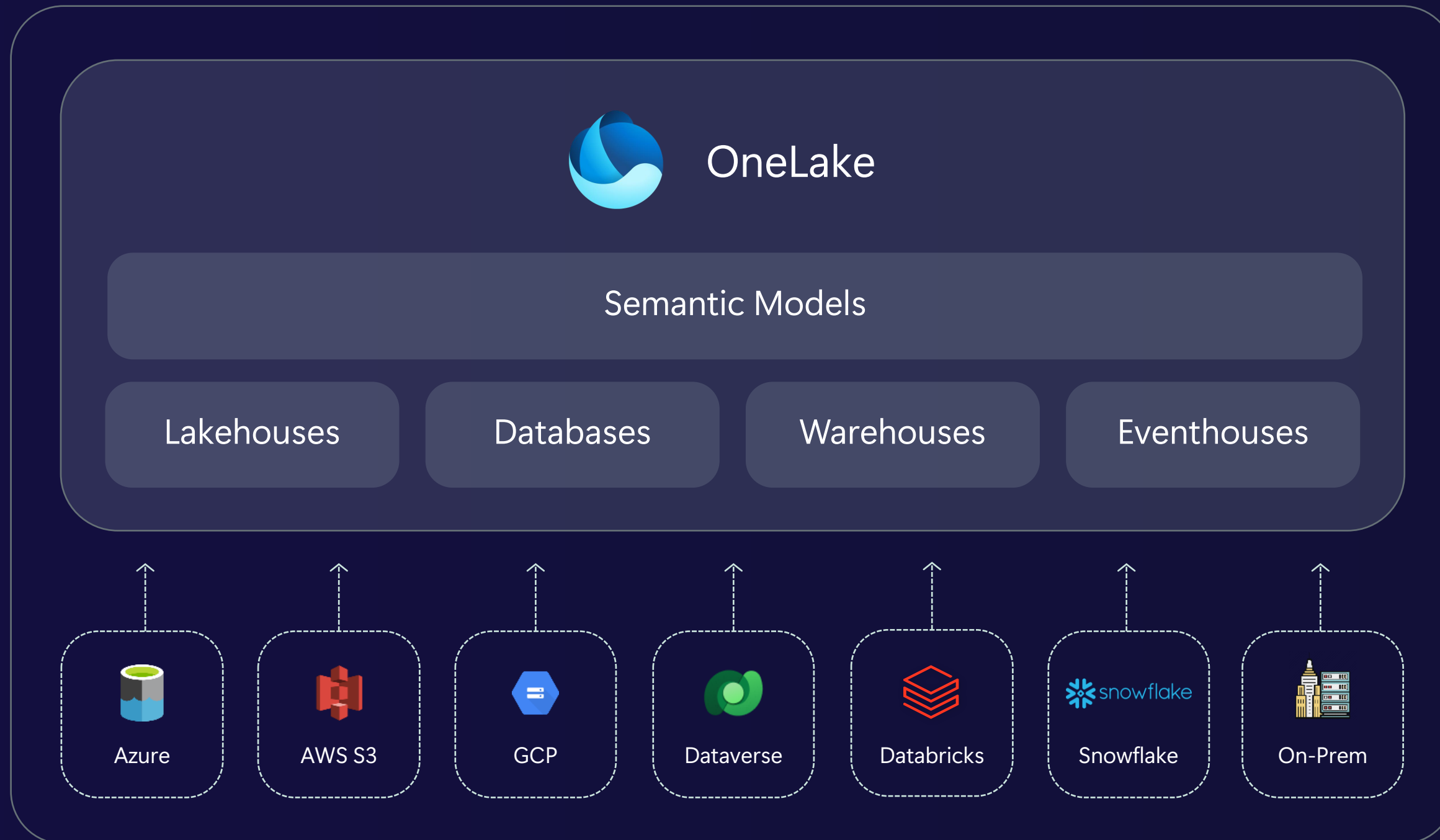
## Unified Data

Structured, Unstructured,  
Real-Time, Graph



# Semantic Models

Grounding AI in trusted business knowledge



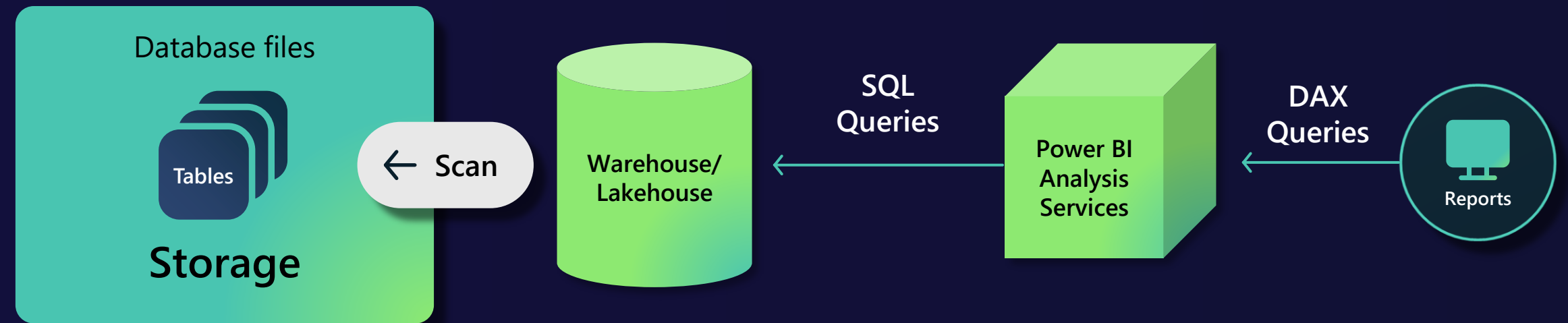
Expertly curated repositories of business data and metrics

Industry rush toward unified semantic layers as **key AI enabler**

**35M+** users regularly using semantic models

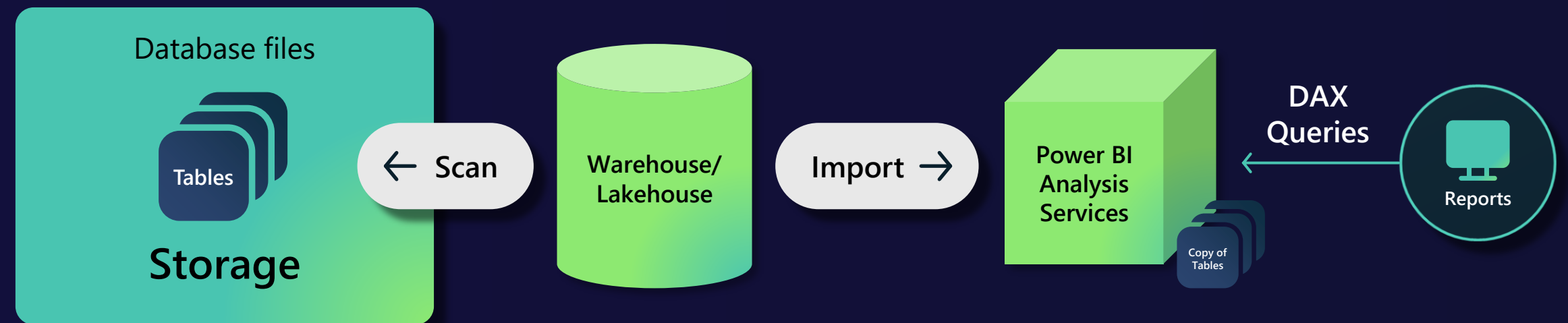
# “Direct Query Mode”

Slow, but real time



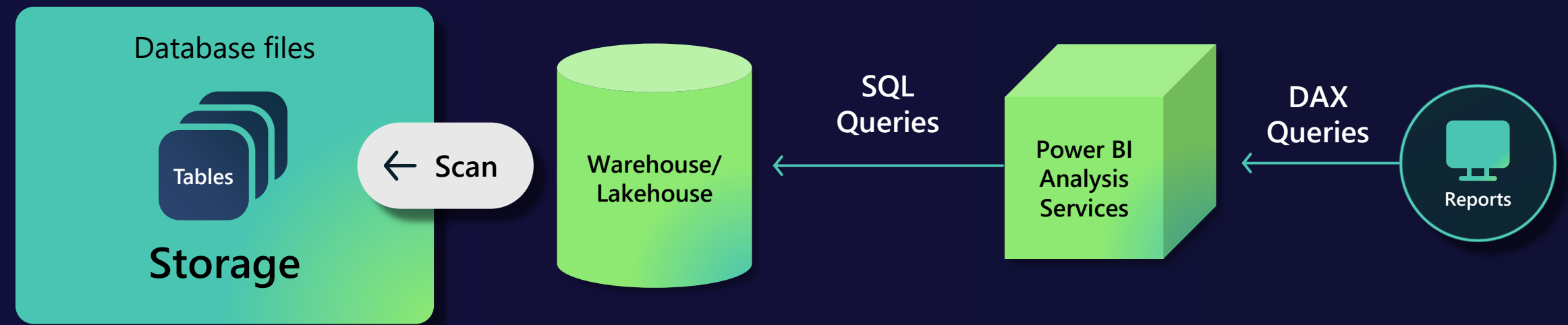
# “Import Mode”

Fast, but duplicative



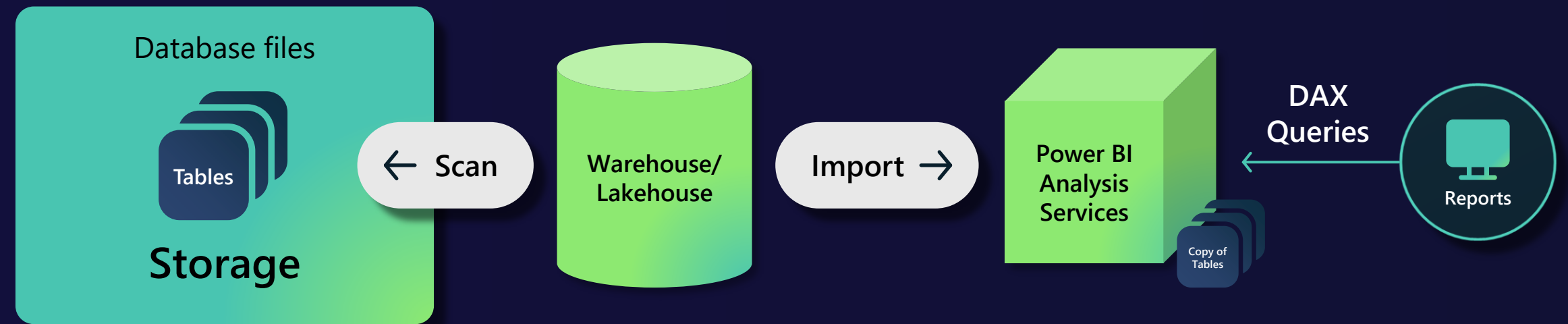
## “Direct Query Mode”

Slow, but real time



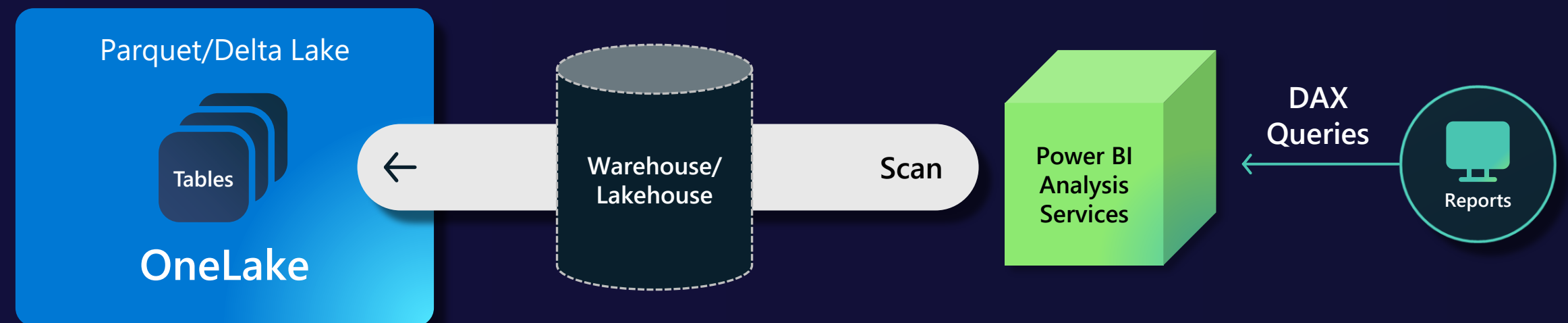
## “Import Mode”

Fast, but duplicative



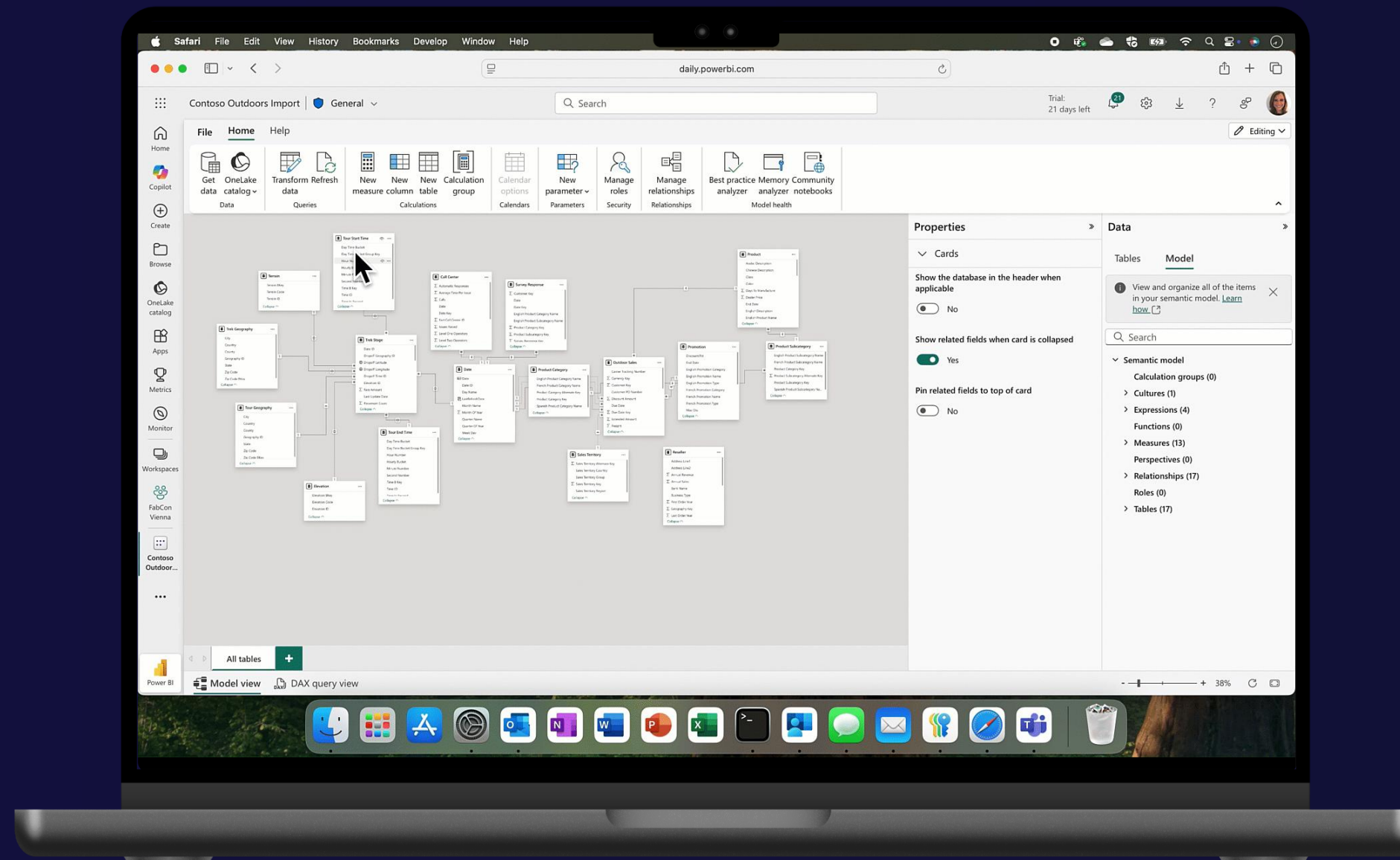
## “Direct Lake Mode”

Fast, real time, no duplication



# Web modeling in Power BI

All the capabilities you know and love, now in your browser



Create models and reports from your browser, Mac users included

Combine Direct Lake and Import modes for composite models

Power Query support for Fabric—plus 100s of other sources

Seamless integration with OneLake and all of Fabric

# Demo

Direct Lake on OneLake composite model

# Semantic Modeling development in the Age of AI

# 4 Pillars of AI-Enhanced Power BI Development



## Code formats

Transitioning from binary files to text-based PBIP.

Unblocks source-control and allows AI assistants to read and write to the code.



## REST APIs / CLI

Facilitate automated collaboration and powerful CI/CD pipelines.

Allow AI to deploy and test in development environments – creating powerful agentic loops.



## MCP Servers

MCP connect AI Agents to Power BI, enabling them to read semantic model schemas, understand relationships, and query while respecting existing security and governance.



## Agentic Context

Inject your team domain expertise into the AI using skills. Developers steer the agent to generate highly personalized, relevant, and accurate outputs.

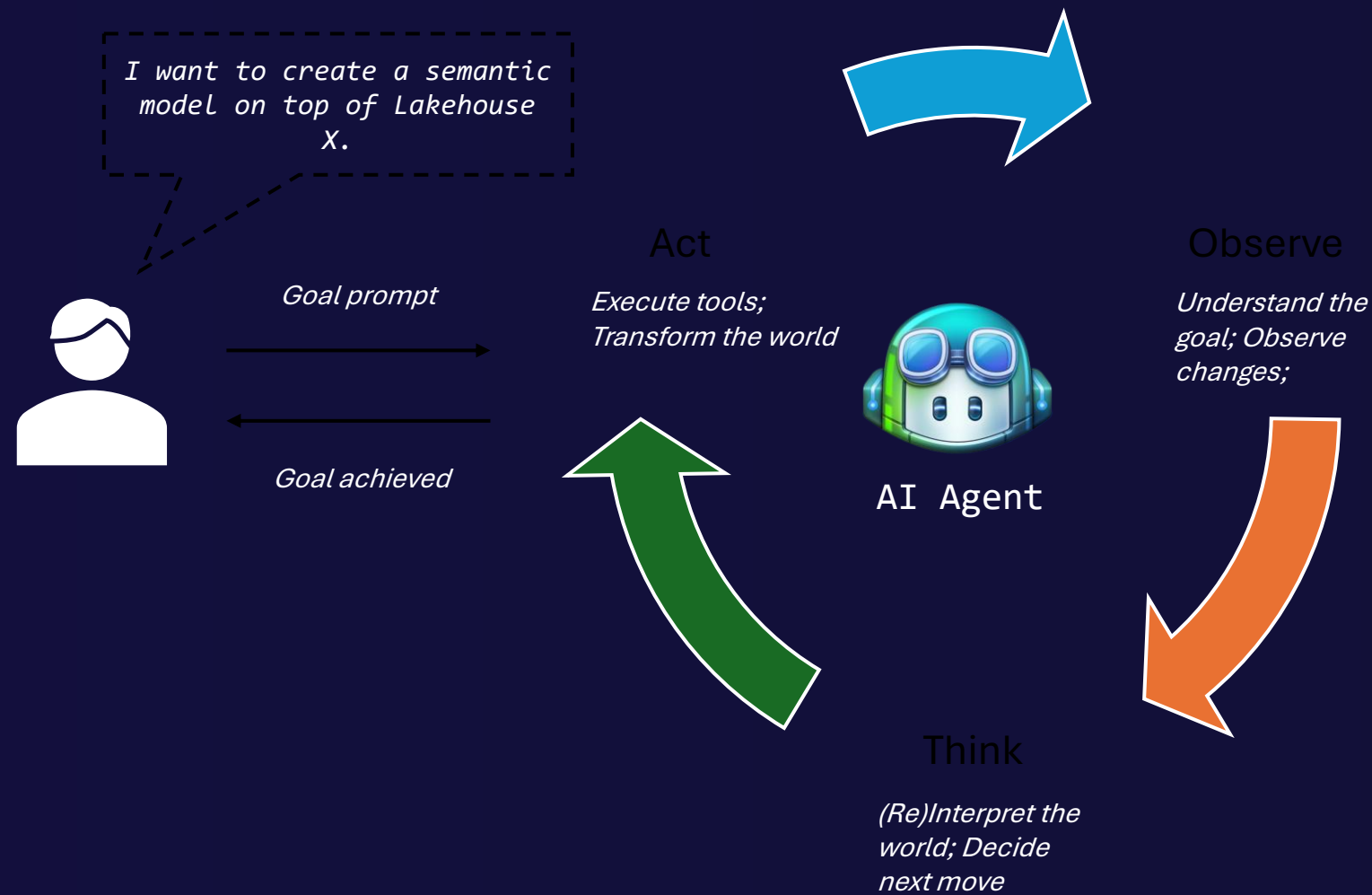
{ } Code -> 🤝 Collaborate -> ⚡ Accelerate

# Demo

10x Power BI Development Efficiency with AI

# Agentic Power BI Development

*“Specs are the new source code” (Sean Grove, OpenAI)*



Goal: Create Semantic Model

Loop 1:

- Observe: Understand goal
- Think: Need schema information
- Act: Call GetSchema

Loop 2:

- Observe: Schema received
- Think: Design Model
- Act: Call CreateModel

Loop 3:

- Observe: Validation issues
- Decide: Diagnose problems
- Act: Call UpdateRelationships

...

Until user goal is achieved.

**Code Formats**

- PBIP
- TMDL
- PBIR

**Tools / APIs**

- MCP
- API / CLI
- Libraries (e.g. TOM)

**Domain Intelligence**

- Skills
- Agents
- Team Guidelines

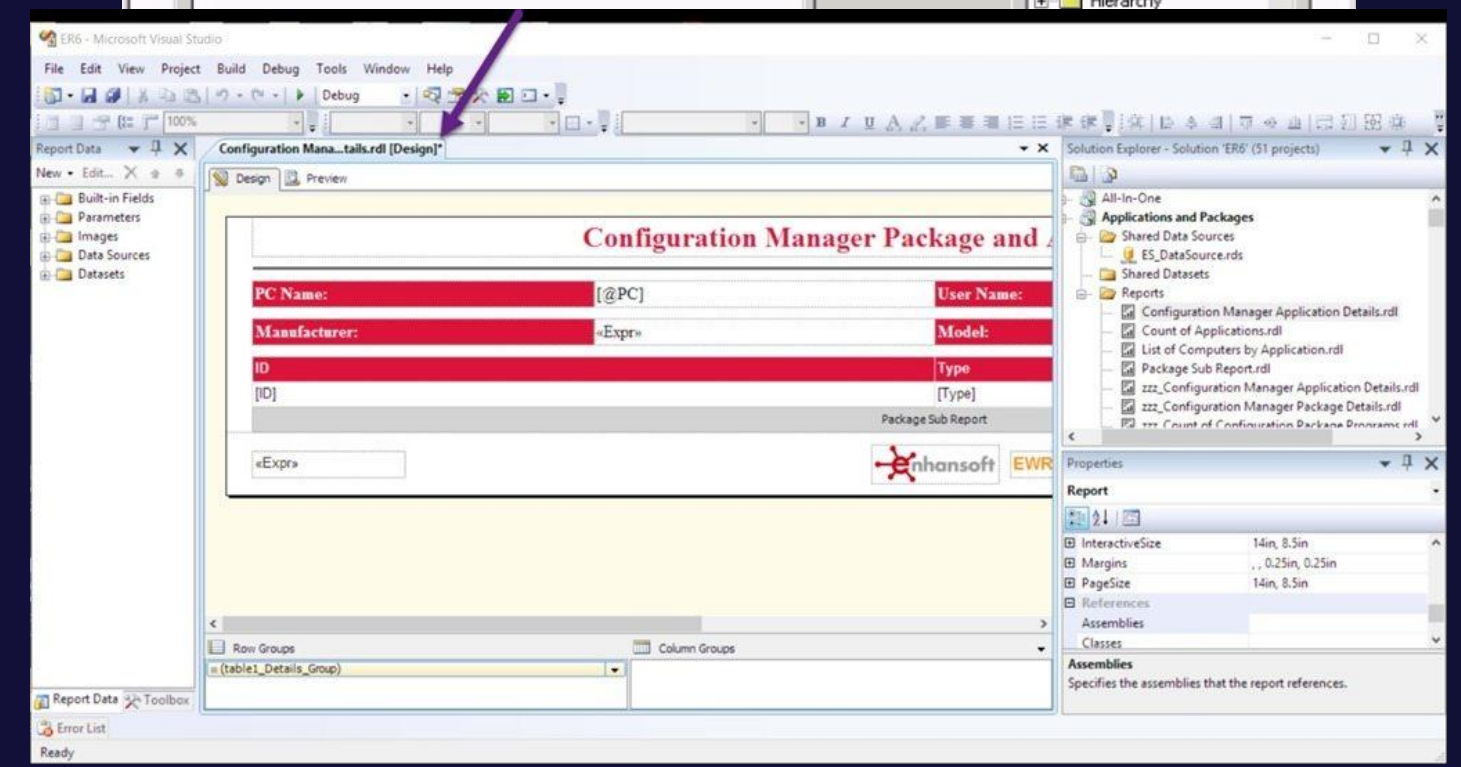
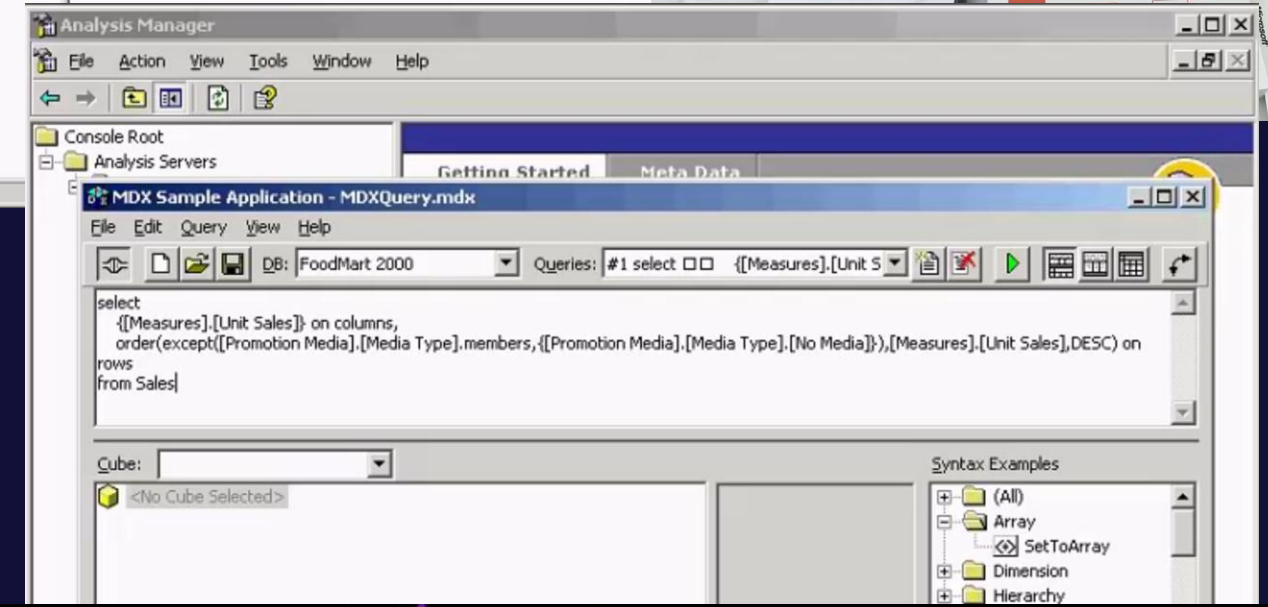
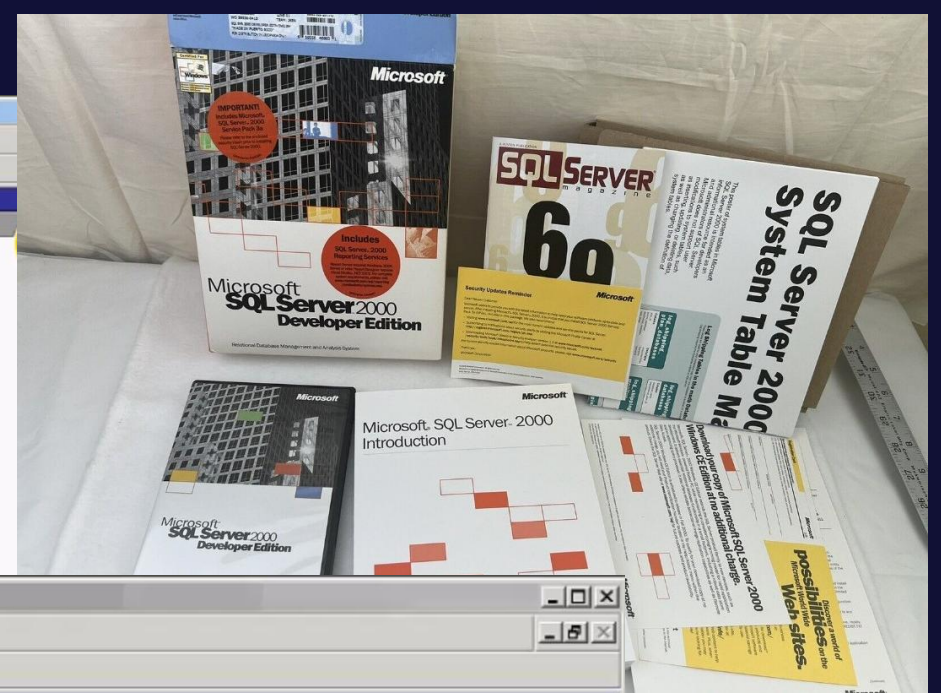
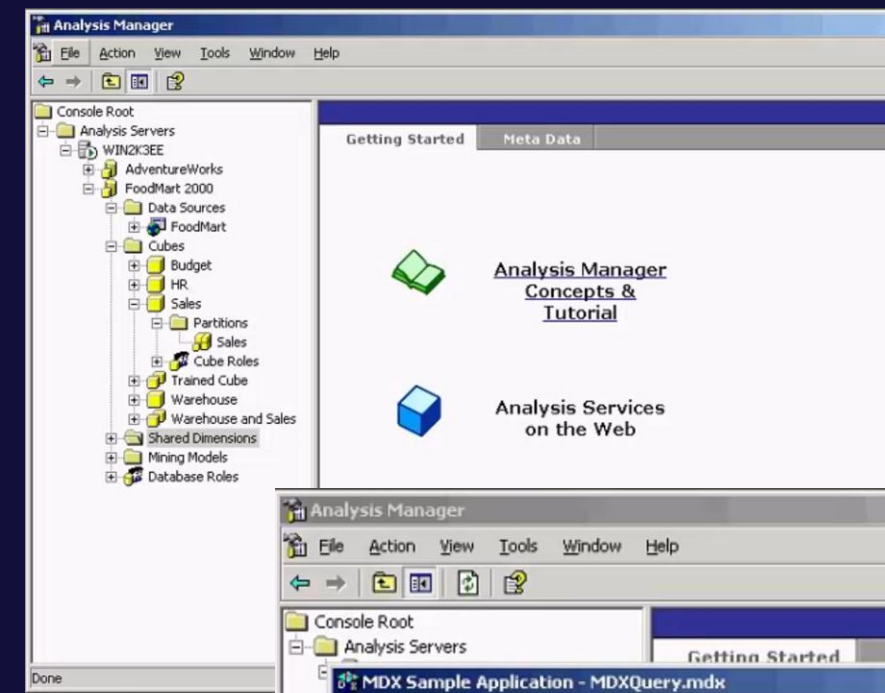
# Demo

E2E Semantic Model development using GitHub Copilot

*“Clicky Clicky  
Draggy Droppy”*

*to*

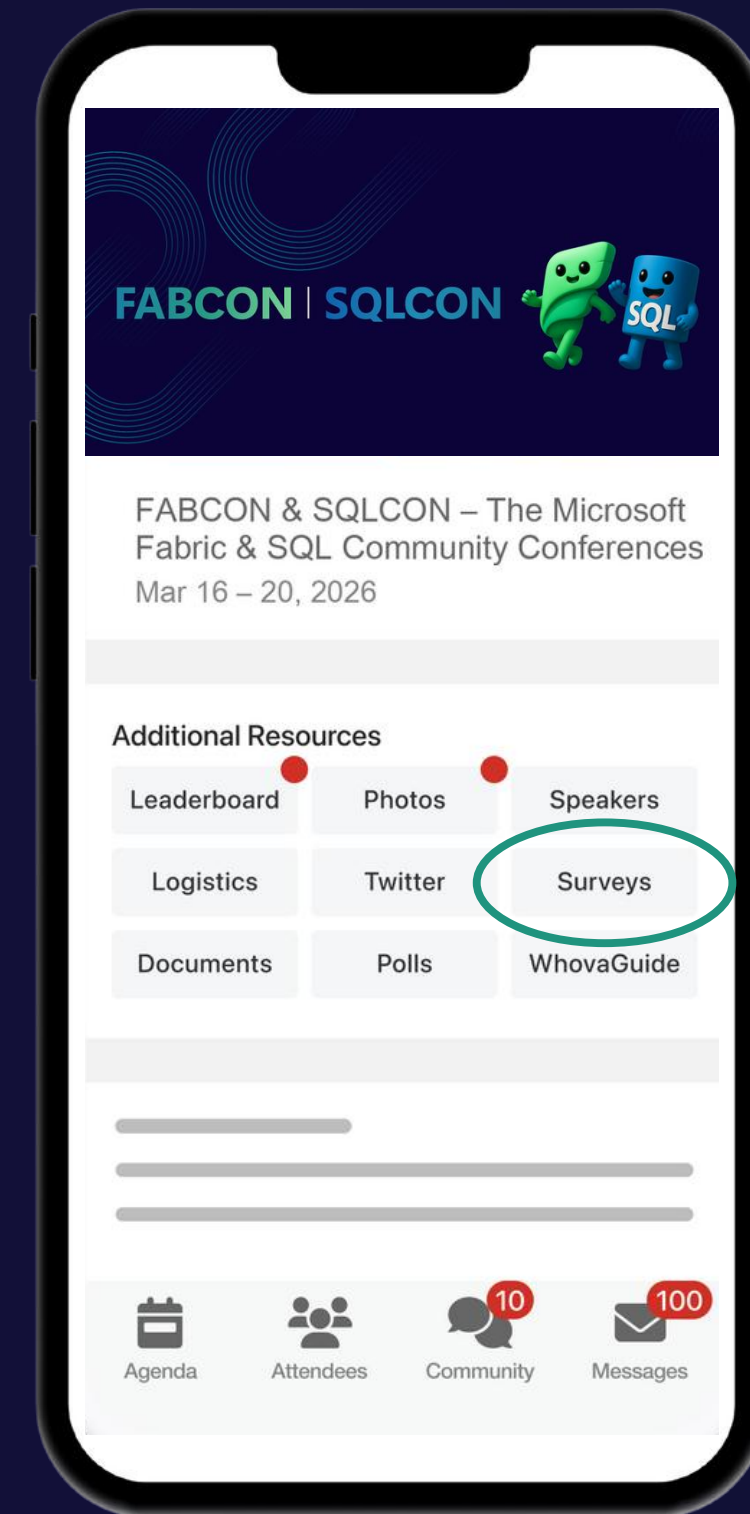
*“Prompty Prompty,  
steary tweaky”*



# How was the session?



Complete Session Surveys in  
*Whova* for your chance to WIN  
PRIZES!



# Get Two Fabric Certifications for FREE

Attendees of FABCON can take the Fabric Analytics Engineer or Fabric Data Engineer exam for free. Be part of the 2 fastest growing role-based certifications in Microsoft history.

**Request your voucher by March 23, 2026.**

<https://aka.ms/fabcon/cert100>

